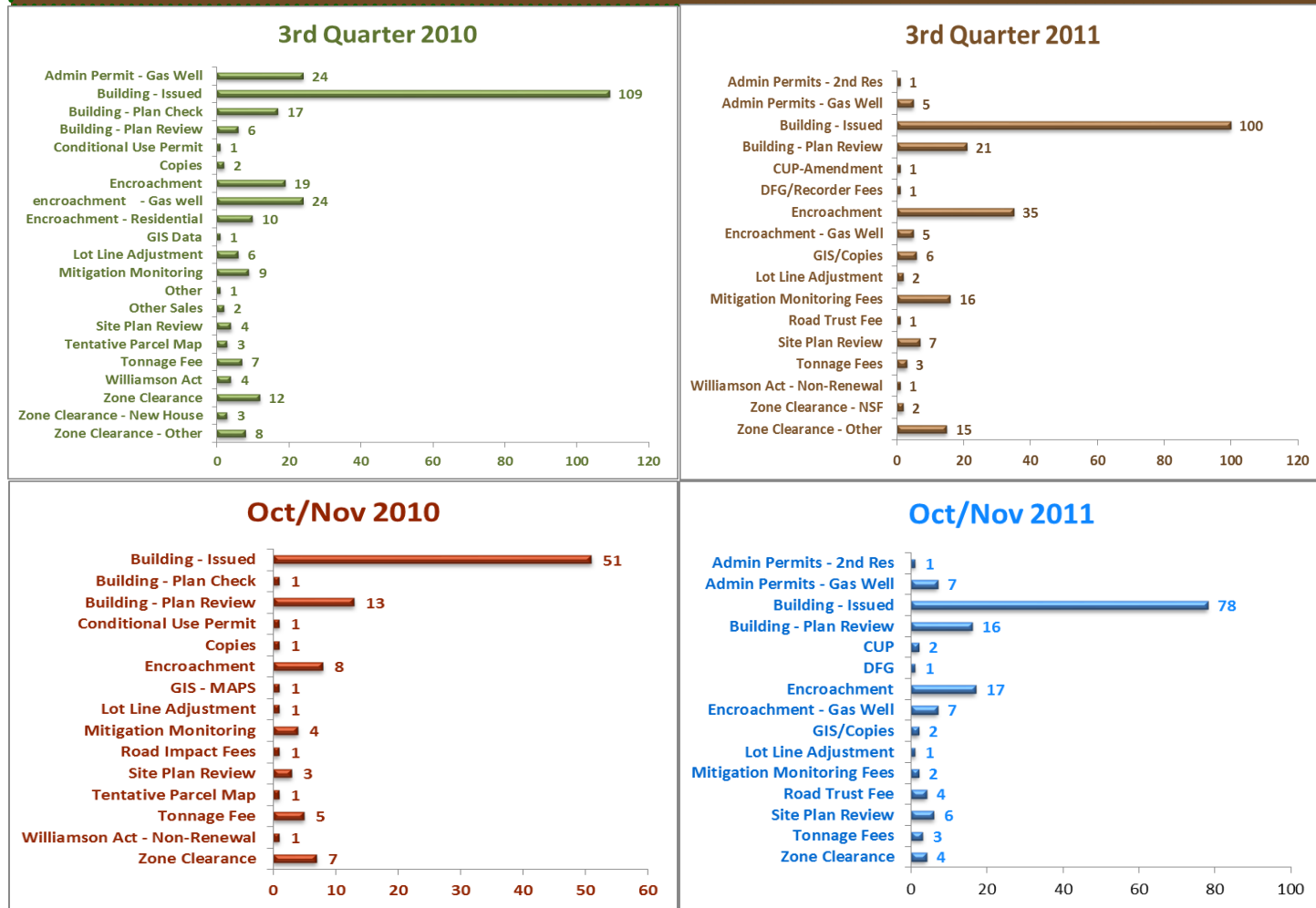


# Permit Center Activity - Quarterly & monthly Comparisons



Nov/Dec 2011



# GLENN COUNTY PLANNING & PUBLIC WORKS AGENCY NEWSLETTER

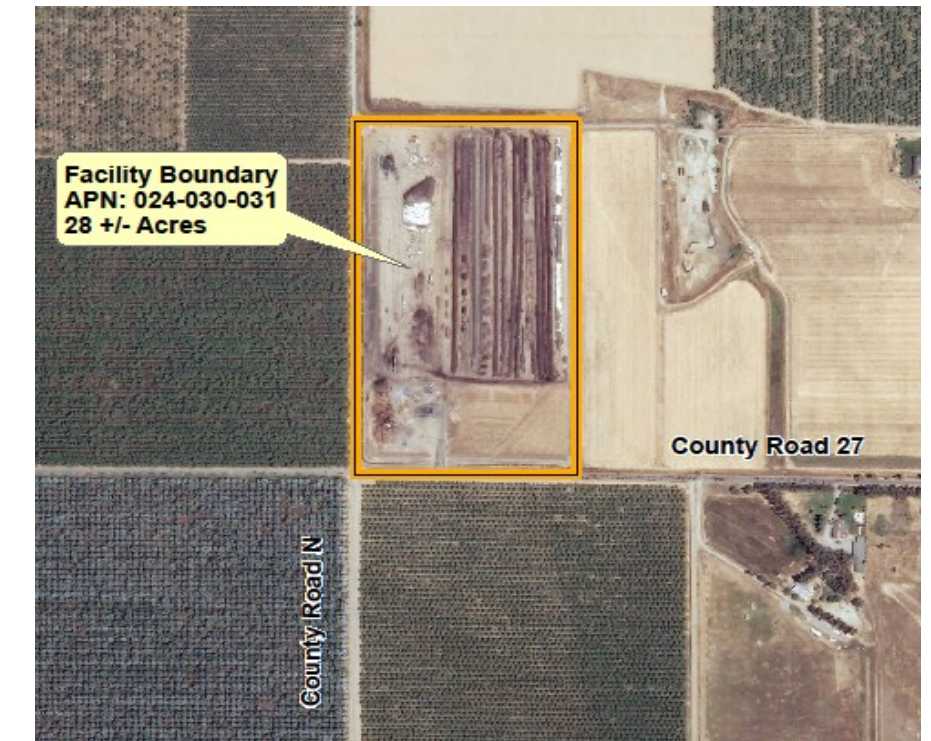
## Planning Commission Approves Expansion of Composting Facility

### Planning Division

On September 21, after comprehensive planning and project analysis, the Glenn County Commission approved a requested amendment to a conditional use permit for Compost Solutions, Inc. located at the intersection of County Road 27 and County Road N. The amendment permits an increase in the annual tonnage limit from 30,000 tons to 50,000 tons and the construction of a 3,750 square foot on-site bagging facility. Green Materials, Animal Manure, Biosolids/Septage, Commercial Fertilizers, Agricultural Waste, non-hazardous Drilling Mud, and Biomass Ash are the composting feed stocks, bulking agents, and compost additives approved for collection and processing.

important aspect of composting because in the absence of an end market, composted materials would have to be landfilled. There are currently several biosolids composting operations operating in California with the majority of operations located in Southern California. According to Cal Recycle, composting is the second largest use of biosol-

posting, recycling, and alternative energy. Everybody benefits when resources are sufficiently used, recycled, and thereby diverted from the landfill. If you have any questions about property, proposing a new business, or the Glenn County Planning Division, please feel free to call our office at 530-934-6540.



ids with approximately 16 percent of the bio-solids being composted for agricultural, horticultural, and land reclamation uses. Bio-solids can be composted using a bulking agent such as wood chips or co-composted with green waste. The Planning Division has observed an increase in projects involving com-

Inside this Issue	Page
California Olive Oils	2
C/R Z Project Completed	3
STIP Project close to completion	3
Permit Center Activity	4

## Trivia Corner

1. What does John Steinbeck refer to as the "Mother Road" in the Grapes of Wrath?
2. What is SoHo short for?
3. Which is the most densely populated country in the world?
4. Who was Muhammad Ali's opponent when he regained the world title in what became known as the Rumble in the Jungle?
5. Who was the first modern athlete picked to play on pro football and baseball All Star games?
6. How many states does the Appalachian Trail traverse?
7. What state after Idaho grows the most potatoes each year?
8. What is the only continent without any bees?
9. What is a dromophobiac afraid to cross?
10. What name is given to domesticated cats that have escaped to live in the wild?

**PUZZLER**  
Name three consecutive days without using the words Wednesday, Friday, or Sunday.



We're on the Web!  
[www.countyofglenn.net](http://www.countyofglenn.net)

## CHRISTMAS TREE SAFETY - Safety tips for selecting, placing and decorating your Christmas

As you celebrate this holiday season, be fire smart. A small fire that spreads to a Christmas tree can grow large very quickly.

- ◆ Choose a tree with fresh, green needles that do not fall off when touched.
- ◆ Before placing the tree in the stand, cut 1" to 2" from the base of the trunk.
- ◆ Make sure the tree is at least 3 feet away from any heat source, like fireplaces, radiators, candles, heat vents or lights.
- ◆ Make sure the tree is not blocking an exit.
- ◆ Add water to the tree stand. Be sure to add water daily.
- ◆ Use lights that have the label of an independent laboratory. Some lights are only for indoor or outdoor use.
- ◆ Replace any string of lights with worn or broken cords or loose bulb

connections. Connect no more than three strands of mini string sets and a maximum of 50 bulbs for screw-in bulbs. Read manufacturer's instructions for number of LED strands to connect.

- ◆ Never use lit candles to decorate the tree.
- ◆ Always turn off Christmas tree lights before leaving home or going to bed.

### AFTER CHRISTMAS:

Get rid of the tree after Christmas or when it is dry. Dried-out trees are a fire danger and should not be left in the home or garage, or placed outside against the home. Check with your local community to find a recycling program. Bring outdoor electrical lights inside after the holidays to prevent hazards and make them last longer.

### FACTS:

- \* One of every three home Christmas tree fires are caused by electrical

problems.

- \* Although Christmas tree fires are not common, when they do occur, they have a higher chance to be deadly.
- \* A heat source too close to the tree causes one in every five of the fires.



Tips provided by the NFPA Public Education Division at [www.nfpa.org/education](http://www.nfpa.org/education).

## California Olive Oils — The Domestic Olive Oil Industry

California olive oils are challenging Europe's. Less than 2 percent of the olive oil consumed in the United States is produced here. That figure is moving up as companies are producing oils that are priced to compete not only in specialty stores, but in supermarkets.

California producers have mounted a major new effort to bring back the domestic olive oil industry, planning thousands of acres and building new mills. The California Olive Ranch\*, located in Artois, is already the largest producer of extra-virgin olive oil in the country.

The California olive oil trade, started by 16th-century Spanish missionaries, was almost dead 10 years ago, except for small scale producers along the Pacific Coast and in the wine country.

The International Olive Council, the global governing body based in Madrid, tests oils and getting the judgment of

trained tasters. Last October, the United States Agriculture Department adopted similar standards, but they are voluntary, and so far not a single bottle on the market has gone through the full certification process. In the absence of federally certified extra virgin, the California Olive Oil Council, a trade group, has created a similar certification process for oils in the state, with special labels granted to those that pass.

Along with laboratory analysis, testing olive oil still involves human taste. Some of the oils produced for the American market are purposefully made smooth: we are perceived as timid when it comes to olive oil. Overall, personal taste and then freshness are your best guides in the slippery, crowded oil aisles. Extra virgin oils produced in the European Union must state either the year of the harvest or a "best by" date on the label: two years is considered the longest possible shelf life.

Olive oil is at its peak of flavor when pressed, and—melodramatic, but true—begins to deteriorate as soon as it is bottled.

(The above excerpts are from The New York Times article entitled "California's Olive Oils Challenge Europe's" by Julia Moskin, Published October 18, 2011. Please see <http://www.nytimes.com/2011/10/19/dining/californias-olive-oils-challenge-europes.html?scp=1&sq=olive%20oils&st=cse> for the complete article.)

\*(The California Olive Ranch (COR) was founded in 1998 and is headquartered in Oroville, CA. They operate two state of the art mills. The first is located in Oroville on 770 acres and the second is located on 1700 acres in Artois. In 2006 the COR made a nine million dollar investment in land and improvements in Glenn County. In 2007 COR completed an additional eight million dollar investment in land and improvements to create the largest contiguous olive orchard in North America for the production of olive oil. To process the large volume of olives that will be produced from these orchards, COR built what is the largest single olive oil mill in the Americas. The company plans to increase capacity from 10-tons per hour in 2008 to 80-tons per hour in 2015.)

## Construction on the County Road Z Bridge over Campbell Slough is complete!



Construction on the County Road Z Bridge over Campbell Slough is complete! - Glenn County has been pursuing the replacement of this bridge for more than 20 years and is very happy to announce its completion. While final project costs won't be in until the final Federal aid project closeout documentation is complete, overall project costs including design, construction, and construction management are currently estimated at \$992,000 of the \$1,164,780 allocated.

This project, designed by TRC/Imbsen, replaced an aging, narrow bridge constructed in 1917 with a new 105-ft long reinforced concrete

bridge.

The Board of Supervisors awarded the construction contract to Franklin Construction, Inc. of Chico at their regular meeting Tuesday, April 19, 2011. They began work on the

new structure located over Campbell Slough approximately 1½ miles north of State Highway 162 on June 9. Their work was completed October 6, 2011, under budget and one week ahead of schedule. Final contract cost was \$731,451.56 of the \$802,414 budgeted. Changes



included the addition of paving fabric and the replacement of the south-east bridge rail terminal end.

This project was funded through the Federal Highway Bridge Replacement and Rehabilitation program with the Federal program paying 88 percent of the project cost and the County paying the remaining 12 percent, or \$87,774.

It is estimated that the project infused nearly \$425,000 into the local economy for the purchase of materials and the payment of local subcontractors.

## State Transportation Improvement Program (STIP) 2011 Progress

County roads included in the 2011 STIP program covered the following roads:

The STIP program will be complete the week of Dec 5, 2011.

All of the Roads on the STIP project have been completed with the Paving, and shoulder backing.

What is left to do is the Striping.

Road 9W from Road KK to Road P is painted as well as Road P from Road 9 to Highway 32

The remaining Roads are 9E from 6<sup>th</sup> Ave to 4<sup>th</sup> Ave in Capay area, 200 Road

206 to Tehama County line, 39 Road D East approximately 1 mile, D From Road 45 to Road 57

The Planning & Public Works Agency



apologizes for any delay and inconvenience this has caused throughout this project.



Information and pictures provided by Dennis Ramirez, Public Works Supervisor