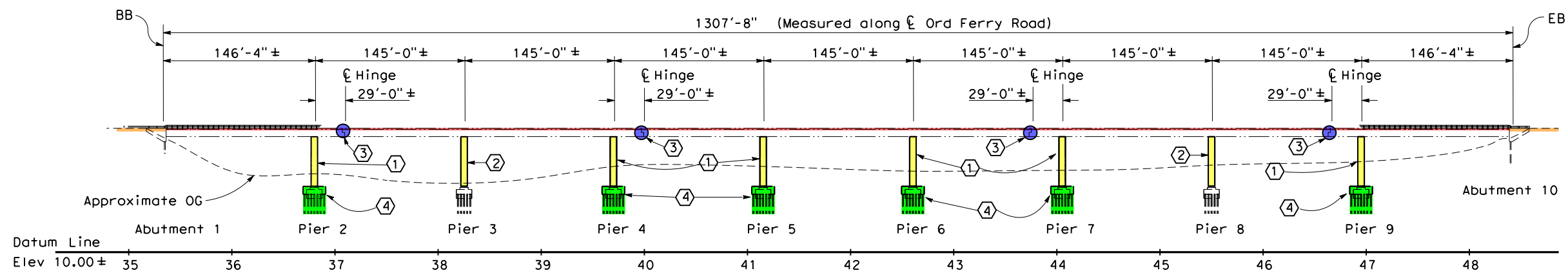


DIST	COUNTY	ROUTE	POST MILES TOTAL PROJECT	SHEET No	TOTAL SHEETS
03	But	Co. Rd.			

REGISTERED CIVIL ENGINEER DATE \_\_\_\_\_  
 PLANS APPROVAL DATE \_\_\_\_\_  
 The Identity of its officers or agents shall not be responsible for the accuracy or completeness of electronic copies of this plan sheet.



**QUINCY ENGINEERING, INC**  
 3247 Ramos Circle  
 Sacramento, CA 95827 - 2501



**WORK SUMMARY**

**STAGE 1**

Construct access trestle over Orbind Boar Ramp Access Channel from westerly Sacramento River Bank to Piers 1 & 2

- Retrofit Foundation of Pier 2
- Retrofit Columns of Piers 2 & 3
- Remove access trestle

**STAGE 2**

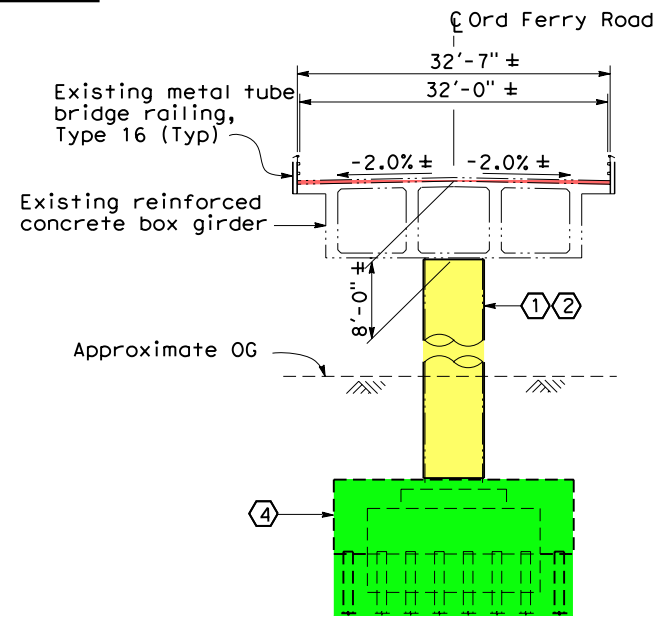
Construct access trestle over Sacramento River from easterly Sacramento River Bank to Piers 4, 5 & 6

- Access from Piers 7, 8, & 9 from Sacramento River Bank
- Retrofit Foundations of Piers 4, 5, 6, 7 & 9
- Retrofit Columns of Piers 4, 5, 6, 7, 8 & 9
- Remove access trestle

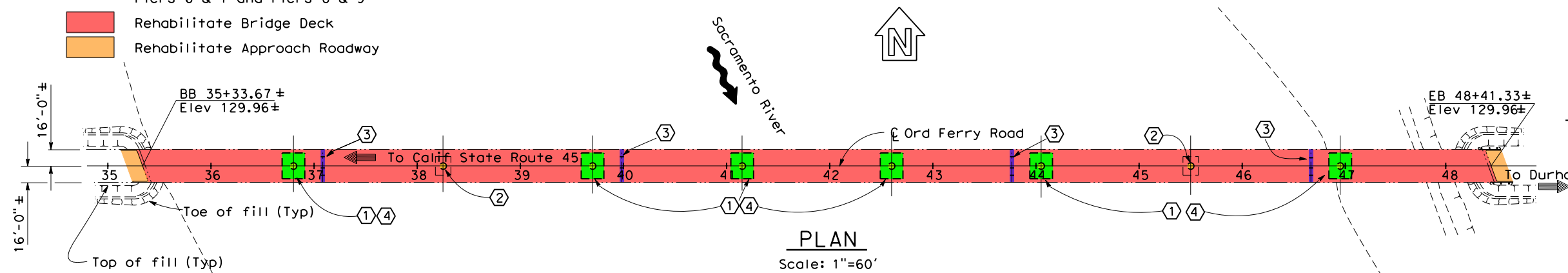
**STAGE 3**

- Retrofit Bridge Hinges located between Piers 2 & 3, Piers 4 & 5, Piers 6 & 7 and Piers 8 & 9
- Rehabilitate Bridge Deck
- Rehabilitate Approach Roadway

**ELEVATION**  
 Scale: 1"=60'



**TYPICAL SECTION**  
 Scale: 1"=10'



**PLAN**  
 Scale: 1"=60'

**INDEX TO PLANS**

Sheet No.	Title
1	General Plan
2	Foundation Layout
3	Footing Retrofit Details
4	Column Casing Details
5	Hinge Retrofit Details No. 1
6	Hinge Retrofit Details No. 2
7	Limits of Payment
8	As-Built Log of Test Borings No. 1
9	As-Built Log of Test Borings No. 2

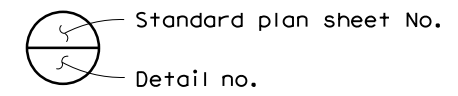
**SYMBOLS**

- Existing structure
- New construction
- Indicates direction of traffic

**RETROFIT LEGEND**

- 1 Class F Column Retrofit
- 2 Class P/F Column Retrofit
- 3 Hinge seat extenders
- 4 New concrete footing and piles

Note:  
 The Contractor shall verify all controlling field dimensions before ordering or fabricating any material.



**STANDARD PLANS DATED JULY 1992**

A10A	Abbreviations
A10B	Symbols
B0-1	Bridge Details
B2-5	Pile Details - Class 45 and Class 70

PREPARED FOR THE  
**COUNTY OF BUTTE**  
 DEPARTMENT OF PUBLIC WORKS

BRIDGE NO.  
12C0120  
 POST MILES

**ORD FERRY RD/SACRAMENTO RIVER**  
**GENERAL PLAN**

DESIGN OVERSIGHT	DESIGN	BY	CHECKED	LOAD & RESISTANCE FACTOR DESIGN	LIVE LOADING: HL93 W/"LOW-BOY"; PERMIT DESIGN VEHICLE	CHECKED
SIGN OFF DATE	DETAILS	BY	CHECKED	LAYOUT	BY	CHECKED
DESIGN GENERAL PLAN SHEET (ENGLISH) (REV. 06-01-09)	QUANTITIES	BY	CHECKED	SPECIFICATIONS	BY	PLANS AND SPECS COMPARED

UNIT: PROJECT NUMBER & PHASE:	CONTRACT NO.: 59Y218	REVISION DATES	SHEET OF
		01/22/93 02/28/93 09/26/93 11/14/93	

TIME PLOTTED => 12/16/2010 1:11:01 PM USERNAME => \_USERNAME\DATE PLOTTED => 12/16/2010 1:11:01 PM